



OPERATIONS SERVICE (OPS) Staff Telephone Directory

OPS ADMINISTRATION		
	Office	County Cell
<i>Office Location: 1100 N. Eastern Avenue, Los Angeles 90063</i>		
Michael Eugene, General Manager	(323) 267-2107	(562) 302-3128
Vacant, Management Secretary	(323) 267-3106	
Lourdes Guerreo, Staff Assistant	(323) 267-2864	(562) 418-8573
Arpine (Arpi) Blkhoyan, Management Analyst		(562) 299-2742
PLANNING & ADMINISTRATION SECTION (PLAD)		
	Office	County Cell
<i>Office Location: 1100 N. Eastern Avenue, Los Angeles 90063</i>		
Melody Velazquez, Section Manager	(323) 267-2344	(562) 390-9051
Ann Luong, Administrative Services Manager	(323) 267-3130	
Sue Chang, Administrative Services Manager	(323) 267-2058	
Maria Arias, Staff Assistant	(323) 267-3131	
Sarah Chen, Staff Assistant	(323) 267-3188	
CUSTOMER CENTER SECTION (CCS)		
	Office	County Cell
<i>Office Location: 1100 N. Eastern Avenue, Los Angeles 90063</i>		
Michael Eugene, Acting Section Manager	(323) 267-2107	(562) 302-3128
Omar Prioleau, Administrative Services Manager II		(562) 306-8807
Jo Yu (Danelle) Chu, Administrative Assistant II		(213) 479-4668
Marlene Castaneda, Administrative Assistant I	(323) 690-0191	
PROGRAM & PROJECT MGMT DIVISION (PPMD)		
	Office	County Cell
<i>Office Location: 1100 N. Eastern Avenue, Los Angeles 90063</i>		
Thomas DeSantis, Division Manager	(323) 881-4492	(562) 922-1355
Margarita Berrueco, Division Secretary	(323) 881-4438	(562) 359-7602
Facilities Condition Assessment Section		
	Office	County Cell
Cesar Espinosa, Section Manager	(323)267-3467	562-334-7374
Chandrasekhar Bandi, Principal Project Manager	(323)267-8281	(562) 413-2202
Ismael Lopez, Principal Project Manager	(323) 607-1105	(562) 413-5553
Janet Brito, Administrative Assistant	(323) 267-2403	(562) 306-8600
Alicia Turner, Administrative Assistant	(323) 443-6876	(562) 846-2576
Cynthia Morales, Secretary III	(323) 607-1098	(562) 659-4994
Ryan Gidley, HVAC	(323) 881-3969	(562) 417-7462
Michael Hitchcock, HVAC	(323) 881-4486	(323) 574-2291
Daniel Brooks, Plumber	(323) 267-2241	(562) 445-2049
Jonathan Moulden, Electrical	(323) 267-2126	(562) 302-5763
Daniel Siqueiros, Electrical	(323) 267-3170	(562) 419-5042
Jane Beconis, Supervising Architect	(323) 267-2684	(323) 390-6017
Viro Kes, Architect	(323) 607-1125	(562)441-7872
Rei Nagahata, Architect	(323) 267-2818	(562) 659-2205
Program Controls Section		
	Office	County Cell
Vacant, Section Manager		
Hasmik Ashgyan, Administrative Services Manager II	(562) 955-4017	(562) 454-6328
Timothy Cunningham, Program Manager	(562) 955-4087	N/A
Claudia Vila, Contract Program Monitor	(562) 955-4088	(562) 381-5311
Hakop Shirinian, Contract Program Monitor	(562) 413-8107	(562) 413-8107
Vanessa Ullua, Contract Program Monitor	(213) 974-9505	N/A
June Hoac, Administrative Assistant	(562) 955-4014	N/A
Elisabeth Bogner, Sr, Typist Clerk	(323) 881-3968	N/A
Project Delivery I		
	Office	County Cell
Alex Huang, Section Manager	(323) 607-1091	(562) 413-1165
Teraign Tate, Administrative Assistant	(323) 607-1123	(562) 445-1587

Bahram Solhjou, Principal Facilities Project Manager	N/A	(310) 598-8454
Jun Sosoban, Principal Project Manager	(323) 267-2244	(562) 302-2311
Craig Jellison, Principal Facilities Project Manager	(323) 607-1097	(562) 299-7710
Victor Huezo, Principal Facilities Project Manager		
Project Delivery II	Office	County Cell
Misha Mikhailpoo, Section Manager	(323) 607-1117	(562) 445-1587
Maria Carmen Alfaro, Secretary III	(323) 607-1115	(562) 413-0440
Peter Del Colliano, Estimator	(323) 267-2278	(323) 605-5613
Paige Bruyn, Principal Project Manager	(323) 267-3196	(213) 929-0391
Gil Batin, Principal Facilities Project Manager	(323) 607-1103	(213) 619-9819
Arthur Sanchez, Facilities Project Manager	(323) 267-2813	(213) 819-0041
Jon Cornelius, Facilities Project Manager	(323) 267-2718	(323) 371-0377
Sharon Velasquez, Facilities Project Manager	Waiting for telecommunication	
FLEET & LOGISTICS DIVISION (FLD)	Office	County Cell
<i>Office Location: 1100 N. Eastern Avenue, Los Angeles 90063</i>		
Nermeen Awad, Division Manager	(323) 607-1070	(323) 835-4741
Lisa Martinez, Division Secretary	(323) 267-2035	
Fleet Services	Office	County Cell
<i>Office: 1104 N. Eastern Ave. Door 45, Los Angeles 90063 HOA: 140 N. Grand Ave. Los Angeles 90012</i>		
Main Number	(323) 881-3919	
Michael Sanchez, Section Manager	(323) 881-3742	(562) 413-3430
Chi-Tai (Melody) Lo, Intermediate Typist Clerk	(323) 881-3741	
Vacant, Intermediate Typist Clerk	(323) 267-2693	
Rhonda Burrell, Intermediate Clerk(LOA)	(323) 881-3734	
Rick Baires Jr., Contract Program Monitor (Eastern & Mira Loma)	(323) 881-3732	(323) 219-7253
James Gilmartin, Contract Program Monitor (Fuel)	(323) 267-3475	(323) 422-4876
Mike Bishop, Contract Program Monitor (Alameda)	(323) 267-2692	(323) 422-1253
Tommie White, Contract Program Monitor (HOA & Culver City)	(323) 267-2072	(323) 422-4724
Minh "Mike" Quan, Contract Program Monitor (Monrovia)	(323) 267-2528	(323) 823-9022
Daniel Martinez, Power Equipment Specification Writer	(323) 267-2045	(562) 330-3381
Renee Kith, Power Equipment Specification Writers	(323) 881-3743	(323) 371-0221
Bayardo Blandino, Automotive Maintenance Assistant	(323) 881-3997	(562) 431-3208
Edward Partida, Power Equip Tech Wrkg Supvr (HOA Garage)	(213) 974-9465	(323) 371-7805
Linda Du, Auto Equipment Coordinator	(213) 974-9465	(562) 302-5255
Facilities & Security Operations Section	Office	County Cell
<i>Office Location: 9150 E. Imperial Hwy, 2nd Floor, Room Q102, Downey 90242</i>		
Michael Medrano, Section Manager	(323) 607-1068	(562) 445-7902
Jean McCabe, Administrative Services Manager	(562) 359-2623	(562) 385-0848
Norma Gonzalez, Administrative Assistant	(562) 359-2624	(562) 417-1739
Vacant, Administrative Assistant	n/a	n/a
Arista Salyard, Senior Clerk	(562) 359-2622	(562) 319-9380
Mail Services	Office	County Cell
<i>Office: 1102 N. Eastern Ave. Los Angeles 90063 Adams & Grand: 2615 S. Grand Ave. Los Angeles 90007</i>		
Leana Anderson, Section Manager	(323) 267-3533	(323) 243-8431
Belen Aguiar, Staff Assistant I	(323) 443-8285	
Alejandra Vasquez, Head Mail & Delivery Services	(323) 267-3486	(562) 841-8915
Supervisors: Vacant	(323) 267-3487	
Thomas Marx	(323) 267-3988	
Laurie Reeves	(323) 267-3519	
Miguel Medrano	(323) 267-3988	

FACILITIES MANAGEMENT DIVISION (FMD)	Office	County Cell
<i>Office Location: 500 W. Temple St., Los Angeles 90012</i>		
Anet Charbakhsh, Division Manager	(323) 267-3445	(562) 413-6750
Latasha James, Division Secretary	(323) 267-2474	(213) 974-9531
Civic Center Custodial Operations	Office	County Cell
<i>Office Location: Hall of Administration, 500 W. Temple Street, Room B-76, Los Angeles 90012</i>		
Garland Thomas, Section Manager	(213) 974-2322	(562) 939-3903
Nina Gonzalez, Secretary	(213) 974-9431	(562) 381-3910
Marsh'a Johnson, Area Custodial Manager	(213) 974-9431	(562) 405-1740
Tara Stinson, Senior Custodian Supervisor-Night	(213) 974-9448/31	
Custodian Supervisor-Night		
Eric Taylor	(213) 974-9431	
Ramiro Cabrera	(213) 974-9431	
Curtis Rambo	(213) 974-9432	
Derek King	(213) 974-9448	
Jacqueline Watson	(213) 974-9448	(562) 454-7543
Michael Cathcart	(213) 974-9431	(562) 454-7933
Custodian Supervisor-Day		
Bertha Gutierrez (Hall of Records)	(213) 974-9448	(562) 319-5232
Vacant	(213) 974-9431	
Michael Sawyers	(213) 974-9431	(562) 454-7826
Rossi Durkee, Warehouse Worker	(213) 974-4391	
Civic Center Maintenance	Office	County Cell
<i>Office Location: Hall of Administration, 500 W. Temple Street, Room B47, Los Angeles 90012</i>		
Service Calls: Maritza Moreno	(213) 974-9531	
Jared Gudino, Section Manager	(213) 974-9592	(213) 999-6842
Latasha James, Actg Secretary	(213) 974-9531	(323) 383-6603
Electrician: Jeremy Davies	(213) 974-9543	(323) 313-3004
Elevator: John Ervin	(213) 974-9549	(323) 383-3289
Locksmith: Eric Lucy	(213) 974-9540	(323) 351-3826
General Maintenance: Mike Soto	(213) 974-9543	(323) 219-3912
Plumber: Jason Ishibiashi	(213) 974-9545	(310) 433-9796
Carpenter: Edward Sainz	(323) 383-6609	
FSC Court: Scott Allen	(213) 974-9532	(323) 204-1315
HVAC: Bryan Langner	(213) 974-9547	(213) 410-6869
Special Services Section	Office	County Cell
<i>Office Location: 1106 N. Eastern Avenue, Los Angeles 90063</i>		
Ceremonies	(323) 267-2840	
Bert Westby, Section Manager	(323) 267-2245	(323) 240-0620
Danielle Gonzales, STC	(323) 267-2840	
Paul Garcia, Carpenter Working Supervisor	(323) 267-3178	(323) 383-2458
Hector Delgadillo, Warehouse Worker	(323) 267-3178	(909) 815-7163
Enrique Rodriguez, C&R Laborer	(323) 267-3178	(213) 410-6871
Juan C. Hernandez, C&R Laborer	(323) 267-3178	(323) 204-1279
David Verduzco, C&R Laborer	(323) 267-3178	(310) 350-0857
Angel Martinez, C&R Laborer	(323) 267-3178	(323) 326-9263
Alex Guillen, C&R Laborer	(323) 267-3178	(323) 240-0491
Sign Shop: Phan Ly	(323) 267-2330	(323) 383-8557
Painters: James Ri	(323) 267-2407	(323) 371-8690
Heat & Frost: Candido De La Rosa	(323) 267-3168	(323) 394-4694
Tony Han, Building Crafts Superintendent	(323) 267-3178	(323) 383-6588
Paul Anyankor, Staff Assistant II	(323) 267-7813	n/a
Parking Services	Office	County Cell
<i>Office Location: 500 W. Temple Street Room B95, Los Angeles 90012</i>		
Anet Charbakhsh, Acting Section Manager	(213) 974-9505	(562) 413-6750

Evelina Shahverdian, Secretary	(213) 974-9505	
Brittany Ramos, Administrative Services Manager I	(213) 974-9522	
Peifang Sun, Staff Assistant II	(213) 974-9505	
Vacant, Contract Program Monitor	(213) 974-9505	
Contract Monitor Supervisors		
Tomas Rivera, Contract Monitor Supervisor	(213) 974-9505	(562) 334-7380
Vanessa Ulloa, Contract Monitor Supervisor	(213) 974-9505	

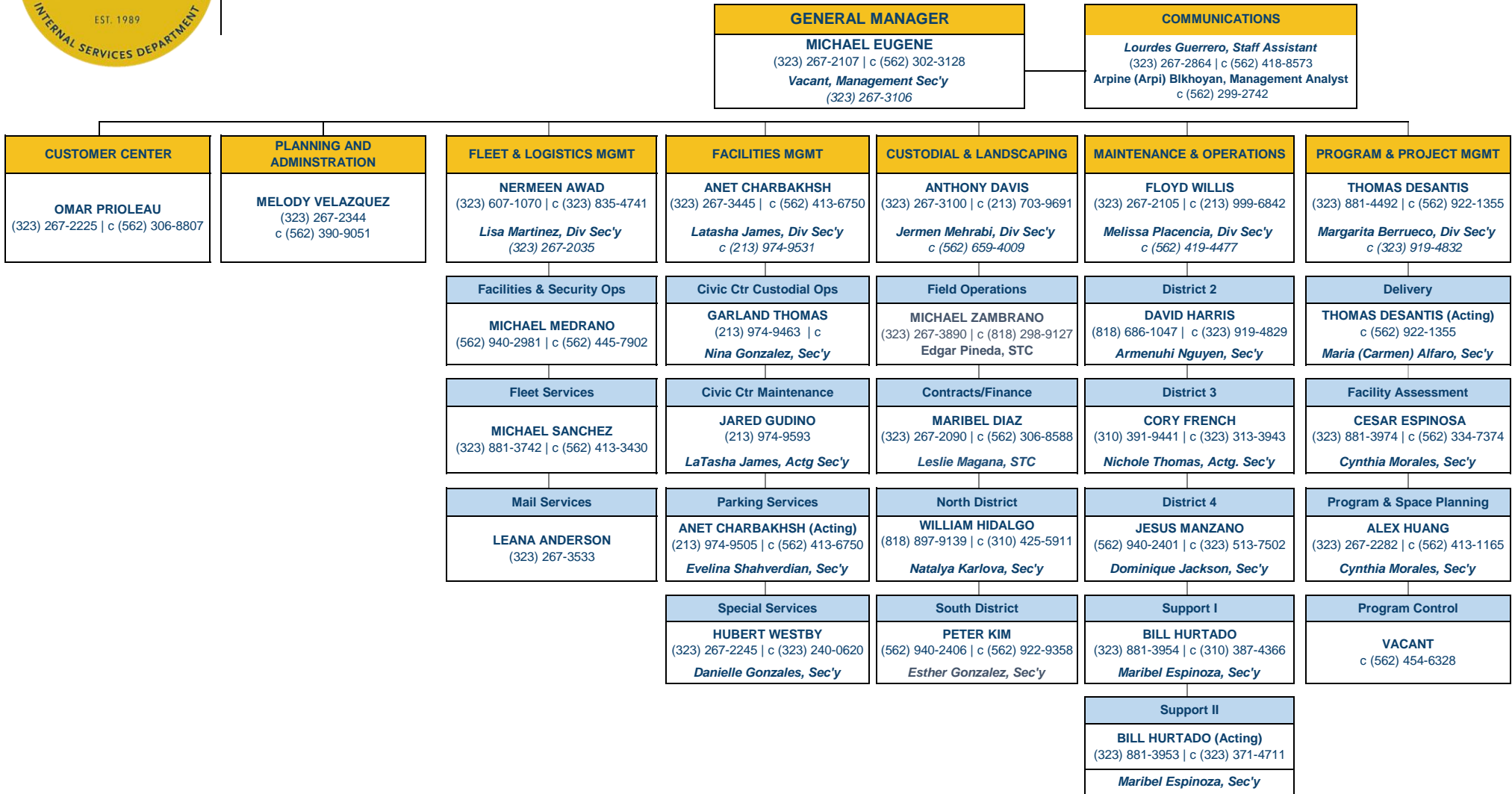
CUSTODIAL & LANDSCAPING DIVISION (CLD)	Office	County Cell
<i>Office Location: 1100 N. Eastern Avenue, Los Angeles 90063</i>		
Anthony Davis , Division Manager	(323) 267-3100	(213) 703-9691
Jermen Mehrabi, Division Secretary	(323) 267-3109	(562) 659-4009
Contract & Finance	Office	County Cell
<i>Office Location: 1100 N. Eastern Avenue, Los Angeles 90063</i>		
Maribel Diaz, Section Manager	(323) 267-2090	(562) 306-8588
Vacant, Building Complex Manager		
Juan Gomez, Administrative Assistant	(323) 267-2004	
Kimberly Hunter, Administrative Assistant	(323) 267-3892	(562) 441-8194
Leslie Magana, Senior Typist Clerk	(323) 267-2744	(562) 302-5068
Steve Romero, Senior Typist Clerk	(323) 267-3136	
Elia Jimenez, Senior Typist Clerk	(323) 881-3752	
Vacant Pest Exterminator Wrkg Supervisor	(323) 267-2755	(562) 302-5068
North District	Office	County Cell
<i>Office Location: 13811 Del Sur Street, San Fernando 91340</i>		
William Hidalgo, Section Manager	(818) 897-9139	(310) 425-5911
Natalya Karlova, Secretary	(818) 897-9139	(562) 441-7688
Jeffrey Martinez-Flores, Building Complex Manager	(818) 897-9139	(562) 745-4403
Enrique Acevedo, Contract Monitor	(818) 897-9139	(562) 359-6151
Angel Velazquez, Contract Monitor	(818) 897-9139	(562) 413-5220
Claudia Loza, Contract Monitor	(818) 897-9139	(562) 659-0701
Vacant Contract Monitor	(818) 897-9139	
Lorena Manzanillo, Acting Custodian Supervisor	(626) 458-4031	(626) 890-8464
Larry Mosley, Custodian Supervisor	(323) 881-2639	(562) 419-3568
South District	Office	County Cell
<i>Office Location: 9230 E. Imperial Hwy, Downey 90242</i>		
Peter Kim, Section Manager	(562) 940-2406	(562) 922-9358
Esther Gonzalez, Secretary	(562) 940-2409	(562) 359-9717
Vacant, Building Complex Manager		
Christopher Smith, Contract Monitor	(562) 575-4245	(323) 919-4960
David Bell, Contract Monitor	(562) 940-2409	(310) 220-5604
Michelle Williams, Contract Monitor	(626) 575-4245	(562) 658-9186
Jesus Luna, Contract Monitor	(562) 674-2248	(562) 419-4845
Yesenia Batres, Acting Custodian Supervisor	(323) 568-8718	(323) 829-3735
Daniel Carlin, Custodian Wkg. Supervisor	(562) 940-2925	(562) 359-9103
Field Operations	Office	County Cell
<i>Office Location: 1100 N. Eastern Avenue, Los Angeles 90063</i>		
Michael Zambrano, Section Manager	(323) 267-3890	(818) 298-9127
Danny Esparza, Building Complex Manager		(562) 445-1530
Edgar Pineda, Senior Typist Clerk	(323) 267-2744	
Beverly Holcombe, Contract Monitor		(323) 533-9497
Christopher Bludso, Contract Monitor	(323) 267-3133	(562) 390-0420
Michel Youssef, Contract Monitor		(562) 659-0688
Matthew Prieto, Contract Monitor		(562) 441-7880
Paul Valdez, Custodian Supervisor	(323) 267-3133	(323) 573-1119
Takari Rogers, Acting Custodian Supervisor		(323) 829-9127

MAINTENANCE & OPERATIONS DIVISION (MOD)	Office	County Cell
<i>Office Location: 1100 N. Eastern Avenue, Los Angeles 90063</i>		
Floyd Willis, Division Manager	(323) 267-2105	(213) 999-6842
Melissa Placencia, Division Secretary	(323) 267-3141	(562) 419-4477
Corinne Gonzalez, Staff Assistant	(323) 267-3113	N/A
Deserie Jimenez, Administrative Assistant	(213) 372-3646	
Vacant, Info. Tech. Aid	(323) 267-3143	N/A
District 2	Office	County Cell
<i>Office Location: 13811 Del Sur Street, San Fernando 91340</i>		
Service Calls	(818) 686-0069	
David Harris, Section Manager	(818) 686-1047	(323) 819-3708
Armenuhi Nguyen, Secretary	(818) 686-0069	N/A
Silvana Vartanian, Clerk	(818) 686-0069	N/A
Building Crafts Superintendents		
Nicola Chiechi, Mid-Valley Complex	(818) 904-8963	323 383-4823
Joe Perez, Probation Liaison	(818) 686-1190	(323) 395-9921
Tony Han, Emergency Operations Center	(323) 267-2245	(323) 351-8697
Electrician: Javier Gonzalez	(818) 686-0158	(323) 819-4831
Elevator: Steve Saracco	(562) 940-2408	(323) 395-9917
Locksmith: Jim Smith	(818) 834-2457	(323) 240-8041
General Maintenance: David Acosta	(818) 686-1968	(213) 410-6896
Plumber: Justin Parrish	(818) 686-0160	(323) 919-4824
Steamfitter/Refrigeration: Leopold Munguia	(818) 686-0180	(323) 351-4722
District 3	Office	County Cell
<i>Office Location: 11236 Playa Court, Culver City 90230</i>		
Service Calls	3103986225;6224&6226	
Cory French, Section Manager	(310) 391-9441	(323) 313-3943
Dominique Jackson, Secretary	(310) 398-6224	
Nichole Thomas, Clerk	(310) 398-6224	(562) 659-6670
Building Crafts Superintendent		
Electrician: Steve Hambro	(310) 391-9830	(323) 383-3326
Elevator: Steve Saracco	(562) 319-2568	(323) 395-9917
Locksmith: Vacant	(310) 391-9694	N/A
General Maintenance: David Lybeck	(310) 397-2830	(323) 807-1373
Plumber: Theodore Marshall	(310) 391-9731	(323) 395-9928
Steamfitter/Refrigeration: Michael Dumpert	(310) 391-9807	(323) 313-9626
District 4	Office	County Cell
<i>Office Location: 9230 E. Imperial Hwy, Downey 90242</i>		
Service Calls	(562) 319-2447	
Jesus (Jesse) Manzano, Section Manager	(562) 319-2117	(323) 513-7502
Vacant, Secretary	(562) 319-2447	
Vanessa Tinajero, STC	(562) 319-2447	N/A
Building Crafts Superintendent		
Paul Ortiz, DPSS Liaison	(562)319-2029	(323) 313-3943
Mike Homan, ELA Civic Center	N/A	(323) 383-4823
Carpenter: Sylvester Anthony	(562) 636-2030	(323) 303-7665
Electrician: Juan Gallardo	(562) 319-2569	(323) 383-6650
Elevator: Steve Saracco	(562) 319-2568	(323) 395-9917
Locksmith: Vacant	(562) 940-2400	N/A
General Maintenance: Angel Garcia	(562) 319-2460	(323) 240-8516
Plumber: Larry Gallardo	(562) 940-2414	(323) 383-6651
Steamfitter/Refrigeration: Norberto Murrieta (Acting)	(562) 319-2173	(562) 385-0143
Support I	Office	County Cell
<i>Office Location: 1102 N. Eastern Avenue Door 6, Los Angeles 90063</i>		
Service Calls	(323) 881-3951	

Guillermo (Bill) Hurtado, Section Manager	(323) 881-3954	(310) 387-4366
Maribel Espinoza, Secretary	(323) 881-3951	N/A
Katesha Smith, Clerk	(323) 267-2070	N/A
Roofing: David Ceballos	(323) 267-2091	(323) 383-2708
Millright: Keith Otte	(323) 267-2342	(323) 204-1339
Sheet Metal Shop (Eastern): Gerardo Zurita	(323) 267-2351	(213) 410-6887
Flooring Shop: Eddie Blancarte	(323) 267-2327	(323) 385-5460
Mason Shop: Sergio Palacios	(323) 267-2366	(323) 493-6159
Fire Extinguisher: Daniel Hernandez	(323) 267-2352	(213) 410-6891
Support II	Office	County Cell
<i>Office Location: 1102 N. Eastern Avenue Door 6, Los Angeles 90063</i>		
Service Calls	(323) 881-3951	
Guillermo (Bill) Hurtado, Acting Section Manager	(323) 881-3953	(310) 387-4366
Maribel Espinoza, Secretary	(323) 881-3951	N/A
Katesha Smith, Clerk	(323) 267-2070	N/A
Electric Shop(Burglar, Fire Alarm Systems): Jeremy Davies	(323) 881-4608	(323) 313-3004
Welding: Gerald Bryant Jr.	(323) 267-2354	(323) 383-6608
Lock Shop: Daryl Lew (Acting)	(323) 267-2335	(323) 385-0084
Welding: Gerald Bryant Jr.	(323) 267-2354	(323) 383-6608
Wastewater: Joel Sears/Cornell Gillenwater	(323) 267-2333	(951) 553-3673 / (323) 383-2736
Environmental Specialist: Amada Hernandez	(323) 881-3717	(323) 395-9600



OPERATIONS SERVICE (OPS) ORGANIZATIONAL CHART & MAIN CONTACTS





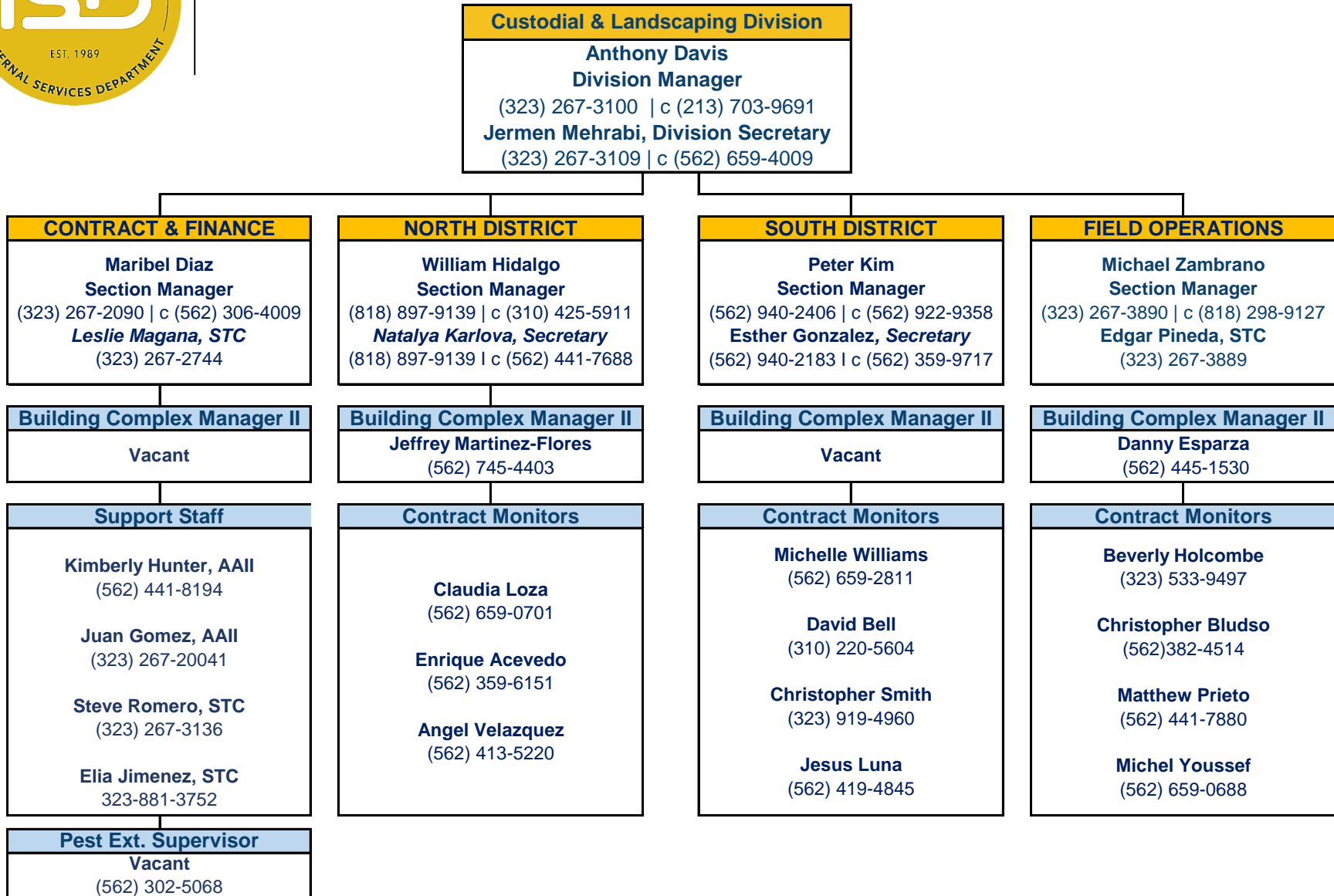
CUSTOMER CENTER SECTION ORGANIZATIONAL CHART & MAIN CONTACTS





CUSTODIAL & LANDSCAPING DIVISION

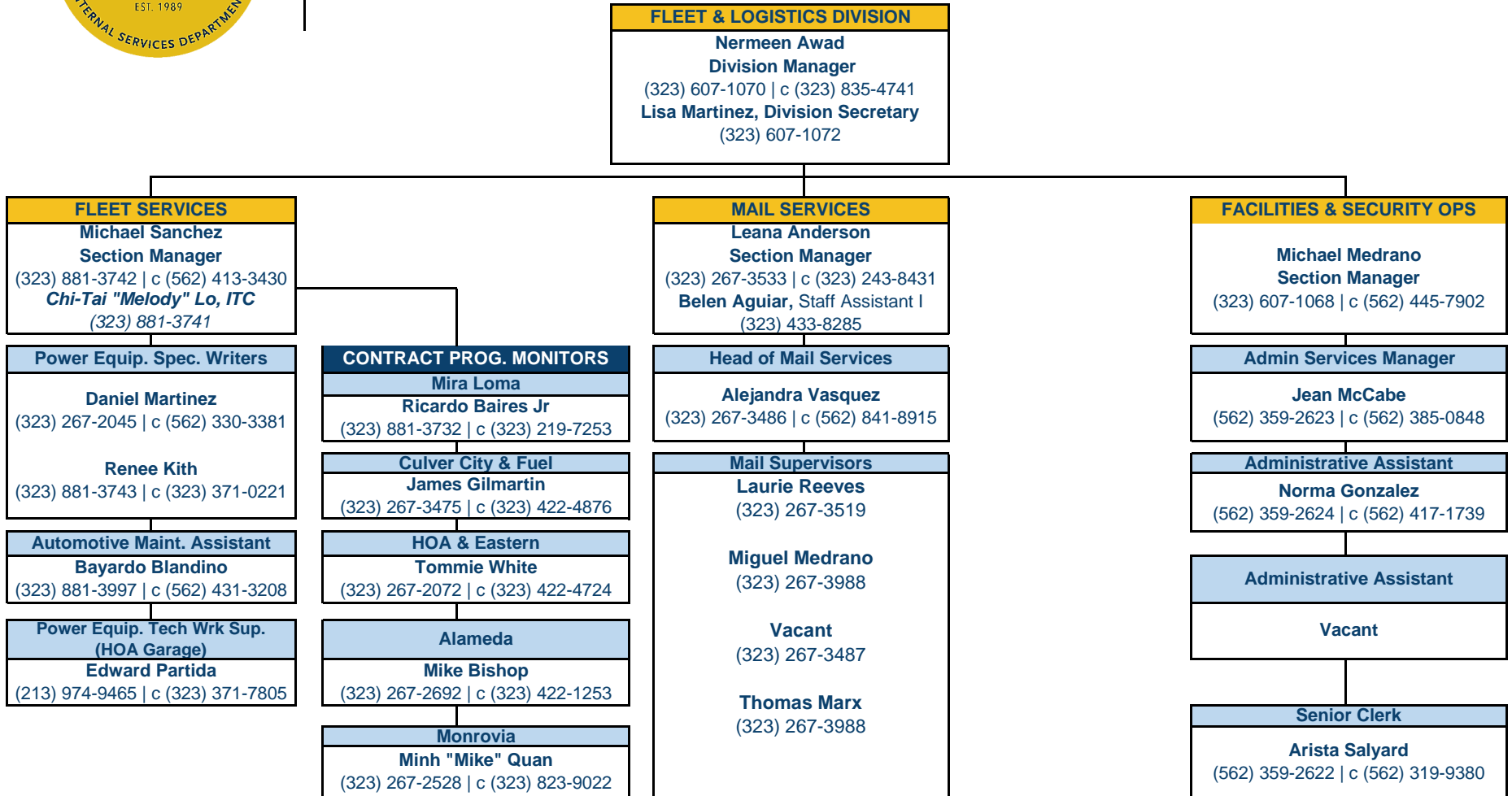
ORGANIZATIONAL CHART & MAIN CONTACTS





FLEET & LOGISTICS DIVISION

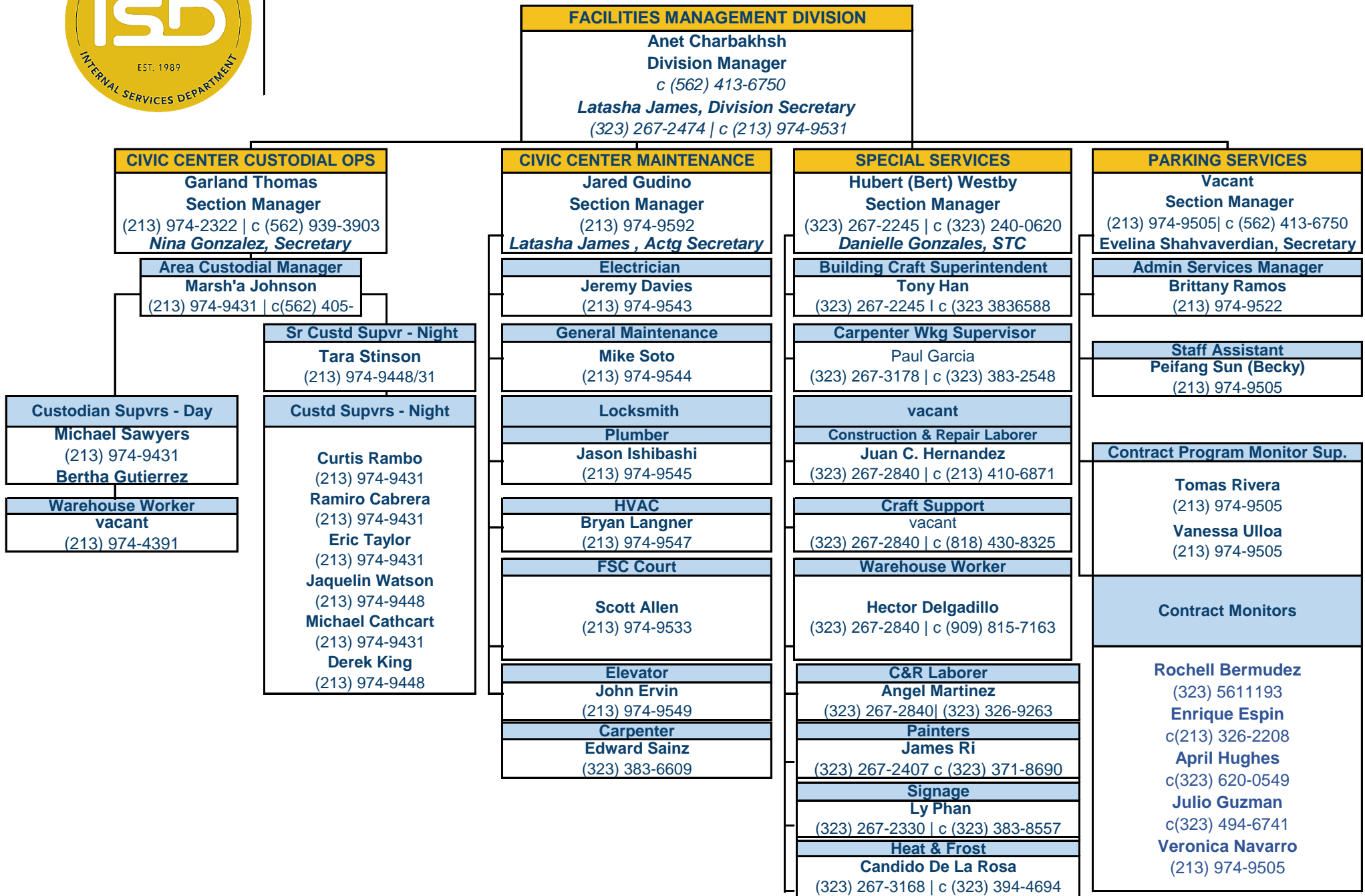
ORGANIZATIONAL CHART & MAIN CONTACTS





FACILITIES MANAGEMENT DIVISION

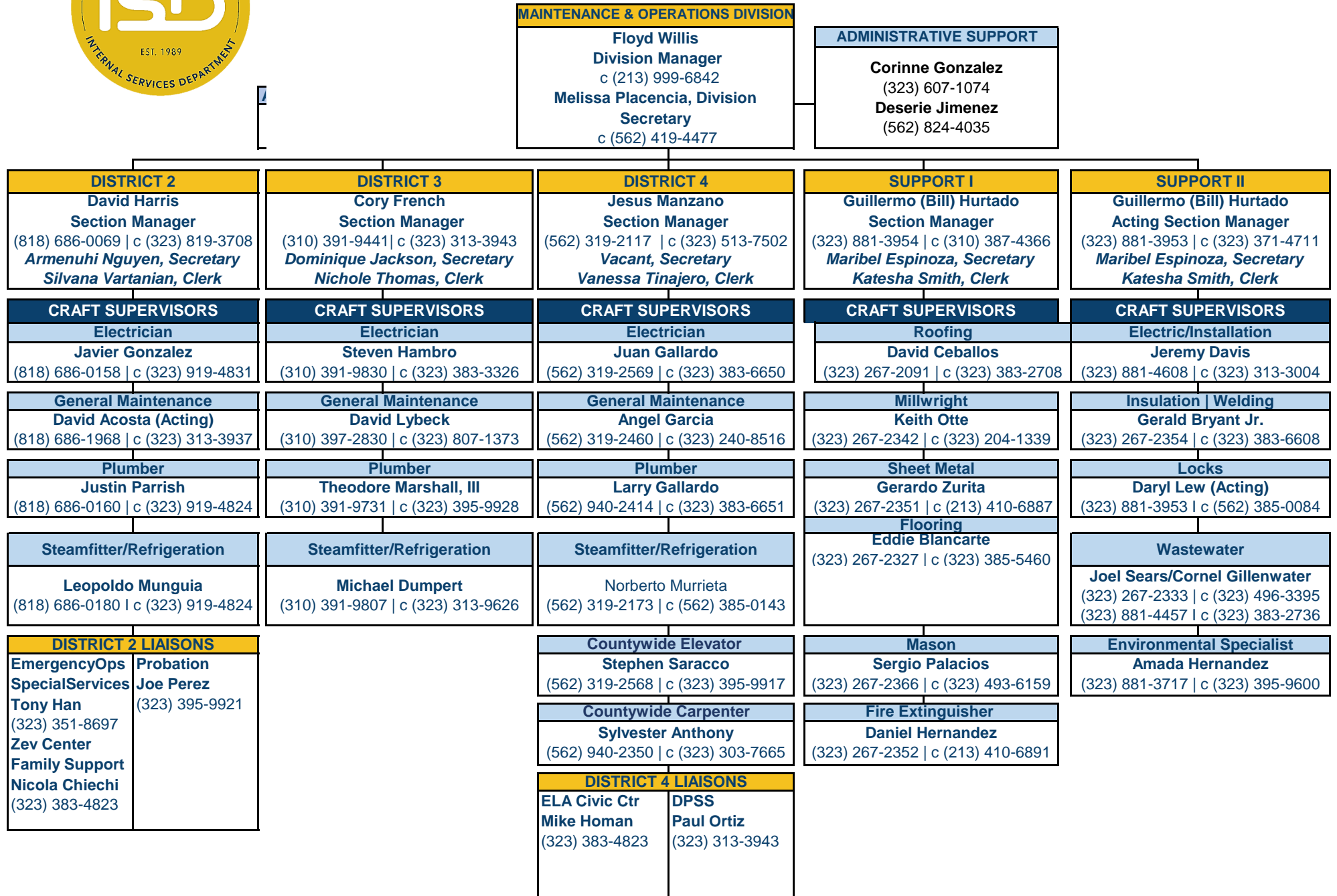
ORGANIZATIONAL CHART & MAIN CONTACTS





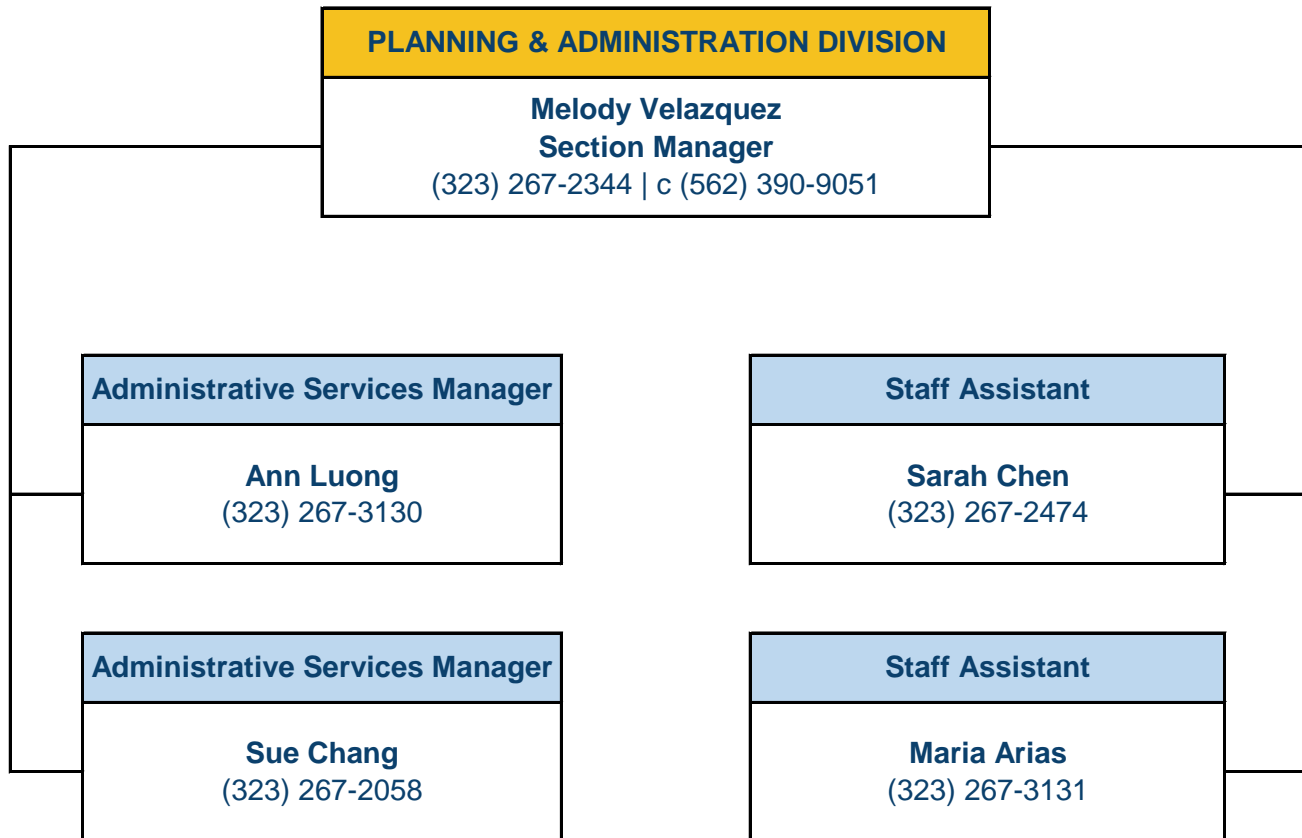
MAINTENANCE & OPERATIONS DIVISION

ORGANIZATIONAL CHART & MAIN CONTACTS





PLANNING & ADMINISTRATION SECTION ORGANIZATIONAL CHART & MAIN CONTACTS





PROGRAM & PROJECT MGMT DIVISION

ORGANIZATIONAL CHART & MAIN CONTACTS

PROGRAM & PROJECT MGMT DIVISION
Thomas DeSantis Division Manager
 c(562) 922-1355
Margarita Berrueco, Division Secretary
 (323) 881-4438 | c (562) 359-7602

