



OPERATIONS SERVICE (OPS) Staff Telephone Directory

OPS ADMINISTRATION **Office** **County Cell**

Office Location: 1100 N. Eastern Avenue, Los Angeles 90063

Michael Eugene, General Manager	(323) 267-2107	(562) 302-3128
Arpine (Arpi) Blkhoyan, Management Secretary	(323) 267-3106	(562) 299-2742
Lourdes Guerreo, Staff Assistant	(323) 267-2864	(562) 418-8573

PLANNING & ADMINISTRATION SECTION (PLAD) **Office** **County Cell**

Office Location: 1100 N. Eastern Avenue, Los Angeles 90063

Melody Velazquez, Section Manager	(323) 267-2344	(562) 390-9051
Ann Luong, Administrative Services Manager	(323) 267-3130	
Sue Chang, Administrative Services Manager	(323) 267-2058	
Maria Arias, Staff Assistant	(323) 267-3131	
Sarah Chen, Staff Assistant	(323) 267-3188	

CUSTOMER CENTER SECTION (CCS) **Office** **County Cell**

Office Location: 1100 N. Eastern Avenue, Los Angeles 90063

Michael Eugene, Acting Section Manager	(323) 267-2107	(562) 302-3128
Vacant, Secretary	(323) 267-2683	
Omar Prioleau, Project Manager	(323) 881-3712	(562) 306-8807
Elisbeth Bogner, Senior Typist Clerk	(323) 881-3968	

PROGRAM & PROJECT MGMT DIVISION (PPMD) **Office** **County Cell**

Office Location: 1100 N. Eastern Avenue, Los Angeles 90063

Thoms DeSantis, Division Manager	(323) 881-4492	(562) 922-1355
Margarita Berrueco, Division Secretary	(323) 881-4438	(562) 359-7602

Facilities Condition Assessment Section **Office** **County Cell**

Cesar Espinosa, Section Manager	(323)267-3467	562-334-7374
Chandrasekhar Bandi, Principal Project Manager	(323)267-8281	(562) 413-2202
Janet Brito, Administrative Assistant	(323) 267-2403	(562) 306-8600
Argina Geverkian, Administrative Assistant	(323) 267-2733	(310) 956-6449
Ryan Gidley, HVAC	(323) 881-3969	(562) 417-7462
Michael Hitchcock, HVAC	(323) 881-4486	(323) 574-2291
Daniel Brooks, Plumber	(323) 267-2241	(562) 445-2049
Jonathan Moulden, Electrical	(323) 267-2126	(562) 302-5763
Daniel Siqueiros, Electrical	(323) 267-3170	(562) 419-5042

Program & Space Planning Section **Office** **County Cell**

Alex Huang, Section Manager	(323) 267-2282	(562) 413-1165
Teraign Tate, Administrative Assistant	(323) 267-2619	
Miranda Kahn, Administrative Assistant		(510) 295-5529
Jane Beconis, Supervising Architect	(323) 267-2684	(323) 390-6017
Viro Kes, Architect	N/A	(562)441-7872
Rei Nagahata, Architect	(323) 267-2818	(562) 659-2205

Program Controls Section **Office** **County Cell**

Tatevik Magakyan, Administrative Services Manager	(562) 955-4017	(562) 454-6328
Timothy Cunningham, Program Manager	(562) 955-4087	N/A
Claudia Vila, Contract Program Monitor	(562) 955-4088	(562) 381-5311
Robert Nicks, Contract Program Monitor	(424) 526-7855	(562) 659-2036
Hakop Shirinian, Contract Program Monitor	(562) 413-8107	(562) 413-8107
June Hoac, Administrative Assistant	(562) 955-4014	N/A

Project Delivery **Office** **County Cell**

Thomas Desantis, Acting Section Manager	N/A	(562) 922-1355
Maria Alfaro, Secretary III	N/A	(562) 413-0440
Misha Mikhailpoo, Principal Facilities Project Manager	N/A	(562) 445-1587

Bahram Solhjou, Principal Facilities Project Manager	N/A	(310) 598-8454
Peter Del Colliano, Estimator	(323) 267-2278	(323) 605-5613
June Sosoban, Principal Project Manager	(323) 267-2244	(562) 302-2311
Paige Bruyn, Principal Project Manager	(323) 267-3196	(213) 929-0391
Arthur Sanchez, Facilities Project Manager	(323) 267-2813	(213) 819-0041
Jon Cornelius, Facilities Project Manager	(323) 267-2718	(323) 371-0377
FLEET & LOGISTICS DIVISION (FLD)	Office	County Cell
<i>Office Location: 1100 N. Eastern Avenue, Los Angeles 90063</i>		
Anet Charbakhsh, Division Manager	(213) 974-9505	(562) 413-6750
Lisa Martinez, Division Secretary	(323) 267-2035	
Fleet Services	Office	County Cell
<i>Office: 1104 N. Eastern Ave. Door 45, Los Angeles 90063 HOA: 140 N. Grand Ave. Los Angeles 90012</i>		
Main Number	(323) 881-3919	
Michael Sanchez, Section Manager	(323) 881-3742	(562) 413-3430
Chi-Tai (Melody) Lo, Intermediate Typist Clerk	(323) 881-3741	
Vacant, Intermediate Typist Clerk	(323) 267-2693	(562) 359-9604
Rhonda Burrell, Intermediate Clerk	(323) 881-3734	
Rick Baires Jr., Contract Program Monitor (Eastern & Mira Loma)	(323) 881-3732	(323) 219-7253
James Gilmartin, Contract Program Monitor (Fuel)	(323) 267-3475	(323) 422-4876
Mike Bishop, Contract Program Monitor (Alameda)	(323) 267-2692	(323) 422-1253
Tommie White, Contract Program Monitor (HOA & Culver City)	(323) 267-2072	(323) 422-4724
Minh "Mike" Quan, Contract Program Monitor (Monrovia)	(323) 267-2528	(323) 823-9022
Daniel Martinez, Power Equipment Specification Writer	(323) 267-2045	(562) 330-3381
Renee Kith, Power Equipment Specification Writers	(323) 881-3743	(323) 371-0221
Bayardo Blandino, Automotive Maintenance Assistant	(323) 881-3997	(562) 431-3208
Edward Partida, Power Equip Tech Wrkg Supvr (HOA Garage)	(213) 974-9465	(323) 371-7805
Linda Du, Auto Equipment Coordinator	(213) 974-9465	(562) 302-5255
Parking Services	Office	County Cell
<i>Office Location: 500 W. Temple Street Room B95, Los Angeles 90012</i>		
Anet Charbakhsh, Acting Section Manager	(213) 974-9505	(562) 413-6750
Evelina Shahverdian, Secretary	(213) 974-9505	
Michael Takata, Administrative Services Manager	(213) 974-9522	
Marsheila Randell, Staff Assistant	(213) 974-9505	
Brittany Ramos, Contract Program Monitor	(213) 974-9505	
Contract Monitor Supervisors		
Tomas Rivera, Contract Monitor Supervisor	(213) 974-9505	(562) 334-7380
Vanessa Ulloa, Contract Monitor Supervisor	(213) 974-9505	
Mail Services	Office	County Cell
<i>Office: 1102 N. Eastern Ave. Los Angeles 90063 Adams & Grand: 2615 S. Grand Ave. Los Angeles 90007</i>		
Leana Anderson, Section Manager	(323) 267-3533	(323) 243-8431
Alejandra Vasquez, Head Mail & Delivery Services	(323) 267-3486	
Supervisors: Lester Cole(LOA)	(323) 267-3487	
Thomas Marx	(323) 267-3988	
Laurie Reeves	(323) 267-3519	
Miguel Medrano(Adams & Grand)	(213) 743-7196	

FACILITIES MANAGEMENT DIVISION (FMD)	Office	County Cell
<i>Office Location: 500 W. Temple St., Los Angeles 90012</i>		
Floyd Willis, Division Manager	(323) 267-3445	c (213) 999-6842
Melissa Placencia, Division Secretary	(323) 267-2474	(562) 419-4477
Civic Center Custodial Operations	Office	County Cell
<i>Office Location: Hall of Administration, 500 W. Temple Street, Room B-76, Los Angeles 90012</i>		
Garland Thomas, Section Manager	(213) 974-9463	
Nina Gonzalez, Secretary	(213) 974-9431	
Marsh'a Johnson, Area Custodial Manager	(213) 974-9431	(562) 405-1740
Vacant, Senior Custodian Supervisor-Night	(213) 974-9431/32	
Custodian Supervisor-Night		
Eric Taylor	(213) 974-9431	
Ramiro Cabrera	(213) 974-9431	
Curtis Rambo	(213) 974-9432	
Derek King	(213) 974-9431	
Jacqueline Watson	(213) 974-9432	(562) 454-7543
Michael Cathcart	(213) 974-9431	(562) 454-7933
Custodian Supervisor-Day		
Bertha Gutierrez (Hall of Records)	(213) 974-9448	(562) 319-5232
Vacant	(213) 974-9431	
Michael Sawyers	(213) 974-9431	(562) 454-7826
Rossi Durkee, Warehouse Worker	(213) 974-4391	
Civic Center Maintenance	Office	County Cell
<i>Office Location: Hall of Administration, 500 W. Temple Street, Room B47, Los Angeles 90023</i>		
Service Calls	(213) 974-9531	
Jared Gudino, Section Manager	(213) 974-9593	(213) 999-6842
LaTasha James, Secretary	(213) 974-9531	
Electrician: Vacant	(213) 974-9543	
Elevator: Leonard Jones	(213) 974-9549	
Locksmith: Eric Lucy	(213) 974-9540	(323) 351-3826
General Maintenance: Mike Soto	(213) 974-9543	(323) 219-3912
Plumber: Jason Ishibiashi	(213) 974-9545	(310) 433-9796
FSC Court: Vacant	(213) 974-9532	
HVAC: Bryan Langner	(213) 974-9547	(213) 410-6869
Special Services Section	Office	County Cell
<i>Office Location: 1106 N. Eastern Avenue, Los Angeles 90063</i>		
Ceremonies	(323) 267-2840	
Bert Westby, Section Manager	(323) 267-2245	(323) 240-0620
Danielle Gonzales, STC	(323) 267-2245	
Vacant, Carpenter Working Supervisor	(323) 267-2840	(323) 240-0491
Hector Delgadillo, Warehouse Worker	(323) 267-2840	(909) 815-7163
Vacant, General Maintenance Worker	(323) 267-2840	(323) 313-3980
Juan C. Hernandez, C&R Laborer	(323) 267-2840	(323) 204-1279
Brian Wilson, C&R Laborer	(323) 267-2840	(323) 383-3237
Angel Martinez, C&R Laborer	(323) 267-2840	(323) 326-9263
Tony Han, Building Crafts Superintendent	(323) 267-3178	(323) 383-6588
Facilities & Security Operations Section	Office	County Cell
<i>Office Location: 9150 E. Imperial Hwy, 2nd Floor, Room Q102, Downey 90242</i>		
Michael Medrano, Section Manager	(562) 940-2981	(562) 445-7902
Jean McCabe, Administrative Services Manager	(562) 940-3044	(562) 385-0848
Norma Gonzalez, Administrative Assistant	(562) 940-3784	(562) 417-1739
Evelyn Salinas, Administrative Assistant	(562) 940-3860	n/a
Arista Salyard, Senior Clerk	(562) 940-3573	(562) 319-9380

CUSTODIAL & LANDSCAPING DIVISION (CLD)	Office	County Cell
<i>Office Location: 1100 N. Eastern Avenue, Los Angeles 90063</i>		
Nermeen Awad , Division Manager	(323) 267-3100	(323) 835-4741
Jermen Mehrabi, Division Secretary	(323) 267-3109	(562) 659-4009
Contract & Finance	Office	County Cell
<i>Office Location: 1100 N. Eastern Avenue, Los Angeles 90063</i>		
Maribel Diaz, Section Manager	(323) 267-2090	(562) 306-8588
Vacant, Building Complex Manager		
Juan Gomez, Administrative Assistant	(323) 267-2004	
Kimberly Hunter, Administrative Assistant	(323) 267-3892	(562) 441-8194
Leslie Magana, Senior Typist Clerk	(323) 267-2744	
Steve Romero, Senior Typist Clerk	(323) 267-3136	
Carlos Anguiano, Pest Exterminator Wrkg Supervisor	(323) 267-2755	(562) 302-5068
North District	Office	County Cell
<i>Office Location: 13811 Del Sur Street, San Fernando 91340</i>		
William Hidalgo, Section Manager	(818) 897-9139	(310) 425-5911
Natalya Karlova, Secretary	(818) 897-9139	(562) 441-7688
Vacant, Contract Monitor	(818) 897-9139	
Jeffrey Martinez-Flores, Contract Monitor	(562) 745-4403	(562) 745-4403
Claudia Loza, Contract Monitor	(818) 897-9139	(562) 659-0701
Erick Rodriguez, Contract Monitor	(818) 897-9139	(562) 413-5226
Vacant, Custodian Supervisor	(626) 458-4031	
Larry Mosley, Custodian Supervisor	(323) 881-2639	(562) 419-3568
South District	Office	County Cell
<i>Office Location: 9230 E. Imperial Hwy, Downey 90242</i>		
Peter Kim, Section Manager	(562) 940-2406	(562) 922-9358
Sarah Tamayo, Secretary	(562) 940-2409	(562) 359-9717
Christopher Smith, Contract Monitor	(562) 575-4245	(323) 919-4960
David Bell, Contract Monitor	(562) 940-2409	(310) 220-5604
Michelle Williams, Contract Monitor	(626) 575-4245	(562) 658-9186
Jesus Luna, Contract Monitor	(562) 674-2248	(562) 419-4845
Arelia Cannon, Custodian Supervisor	(323) 568-8718	(323) 829-3735
Daniel Carlin, Custodian Wkg. Supervisor	(562) 940-2925	(562) 359-9103
Field Operations	Office	County Cell
<i>Office Location: 1100 N. Eastern Avenue, Los Angeles 90063</i>		
Michael Zambrano, Section Manager	(323) 267-3890	(818) 298-9127
Danny Esparza, Building Complex Manager		(562) 445-1530
Vacant, Senior Typist Clerk	(323) 267-2744	
Beverly Holcombe, Contract Monitor		(323) 533-9497
Christopher Bludso, Contract Monitor	(323) 267-3133	(562) 390-0420
Michel Youssef, Contract Monitor		(562) 659-0688
Matthew Prieto, Contract Monitor		(562) 441-7880
Paul Valdez, Custodian Supervisor	(323) 267-3133	(323) 573-1119
Enrique Acevedo, Custodian Supervisor		(562) 359-6151

MAINTENANCE & OPERATIONS DIVISION (MOD)	Office	County Cell
--	---------------	--------------------

Office Location: 1100 N. Eastern Avenue, Los Angeles 90063

Anthony Davis, Division Manager	(323) 267-2105	(213) 703-9691
Shalia Thompson, Division Secretary	(323) 267-3141	(562) 827-7400
Corinne Gonzalez, Staff Assistant	(323) 267-3113	N/A
Whileta Brunelle, Info. Tech. Aid	(323) 267-3143	N/A

District 2	Office	County Cell
-------------------	---------------	--------------------

Office Location: 13811 Del Sur Street, San Fernando 91340

Service Calls	(818) 686-0069	
David Harris, Section Manager	(818) 686-1047	(323) 919-4829
Armenuhi Nguyen, Secretary	(818) 686-0069	N/A
Silvana Vartanian, Clerk	(818) 686-0069	N/A

Building Crafts Superintendents		
--	--	--

Nicola Chiechi, Mid-Valley Complex	(818) 904-8963	(323) 819-3708
Vacant, Probation Liaison	(818) 686-1190	(323) 240-2228
Tony Han, Emergency Operations Center	(323) 267-2245	(323) 351-8697
Electrician: Javier Gonzalez	(818) 686-0158	(323) 819-4831
Elevator: Steve Saracco	(562) 940-2408	(323) 395-9917
Locksmith: Jim Smith	(818) 834-2457	(323) 240-8041
General Maintenance: John Marquez	(818) 686-1968	(323) 313-3931
Plumber: Justin Parrish	(562) 940-2414	(323) 383-6651
Steamfitter/Refrigeration: Leopold Munguia	(818) 686-0180	(323) 351-4722

District 3	Office	County Cell
-------------------	---------------	--------------------

Office Location: 11236 Playa Court, Culver City 90230

Service Calls	(310) 398-6225	
Cory French, Section Manager	(310) 391-9441	(323) 313-3943
Linda Jones, Secretary	(310) 398-6224	(562) 454-7774
Nichole Thomas, Clerk	(310) 398-6224	(562) 413-8213

Building Crafts Superintendent		
---------------------------------------	--	--

Electrician: Steve Hambro	(310) 391-9830	(323) 383-3326
Elevator: Steve Saracco	(562) 940-2408	(323) 395-9917
Locksmith: Ed Hall	(310) 391-9694	N/A
General Maintenance: David Lybeck	(310) 397-2830	(323) 807-1373
Plumber: Theodore Marshall	(310) 391-9731	(323) 395-9928
Steamfitter/Refrigeration: Michael Dumpert	(310) 391-9807	(323) 313-9626

District 4	Office	County Cell
-------------------	---------------	--------------------

Office Location: 9230 E. Imperial Hwy, Downey 90242

Service Calls	(562) 940-2401	
Jesus (Jesse) Manzano, Section Manager	(562) 940-2405	(323) 513-7502
Dominique Jackson, Secretary	(562) 940-2401	(562) 385-0325
Monica Mancilla, STC	(562) 940-2401	(562) 413-8307

Building Crafts Superintendent		
---------------------------------------	--	--

Paul Ortiz, DPSS Liaison	(562) 674-2244	(323) 313-3943
Mike Homan, ELA Civic Center	(323) 881-4601	(323) 383-4823
Carpenter: Sylvester Anthony	(562) 940-2350	(323) 303-7665
Electrician: Juan Gallardo	(562) 940-2412	(323) 383-6650
Elevator: Steve Saracco	(562) 940-2408	(323) 395-9917
Locksmith: Juan Rios-Aguilar	(562) 940-2400	(323) 383-6620
General Maintenance: Angel Garcia	(562) 940-2407	(323) 240-8516
Plumber: Larry Gallardo	(562) 940-2414	(323) 383-6651
Steamfitter/Refrigeration: Joseph (Joe) Perez	(562) 940-2413	(323) 385-9921

Support I	Office	County Cell
------------------	---------------	--------------------

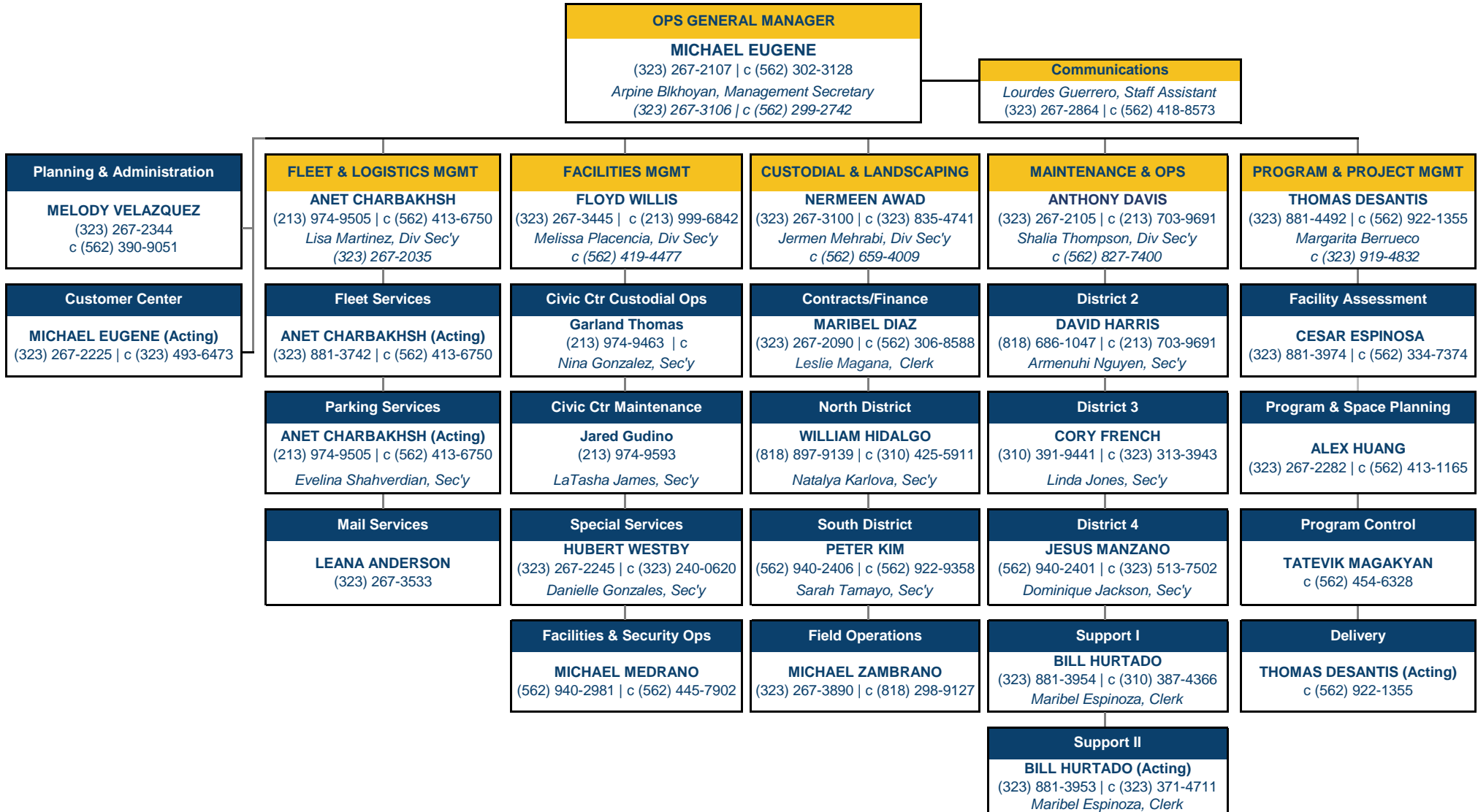
Office Location: 1102 N. Eastern Avenue Door 6, Los Angeles 90063

Service Calls	(562) 940-2401	
Guillermo (Bill) Hurtado, Section Manager	(323) 881-3954	(310) 387-4366

Maribel Espinoza, Secretary	(323) 881-3951	(323) 395-7268
Katesha Smith, Clerk	(323) 267-2070	N/A
Painters: James Ri	(323) 267-2407	(323) 371-8690
Roofing: David Ceballos	(323) 267-2091	(323) 383-2708
Millright: Keith Otte	(323) 267-2342	(323) 204-1339
Sheet Metal Shop (Eastern): Daryl Lew	(323) 267-2351	(323) 881-4429
Flooring Shop: Eddie Blancarte	(323) 267-2327	(323) 385-5460
Mason Shop: Sergio Palacios	(323) 267-2366	(323) 493-6159
Sign Shop: Armando Villareal	(323) 267-2330	(626) 298-4777
Fire Extinguisher: Daniel Hernandez	(323) 267-2352	(213) 410-6891
Support II	Office	County Cell
<i>Office Location: 1102 N. Eastern Avenue Door 6, Los Angeles 90063</i>		
Service Calls	(562) 940-2401	
Guillermo (Bill) Hurtado, Acting Section Manager	(323) 881-3953	(323) 371-4711
Maribel Espinoza, Secretary	(323) 881-3951	(323) 395-7268
Katesha Smith, Clerk	(323) 267-2070	N/A
Electric Shop(Burglar, Fire Alarm Systems): Vacant	(323) 881-4608	(213) 269-0890
Electric/Installation: Vacant	(323) 881-4608	(213) 269-0890
Insulator: Gerald Bryant Jr.	(323) 267-3168	(323) 383-6608
Lock Shop: Robert Desmond	(323) 267-2335	(323) 303-6924
Welding: Gerald Bryant Jr.	(323) 267-2354	(323) 383-6608
Wastewater: Joel Sears/Cornell Gillenwater	(323) 267-2333	(951) 553-3673 / (323) 383-2736
Environmental Specialist: Amada Hernandez	(323) 881-3717	(323) 395-9600



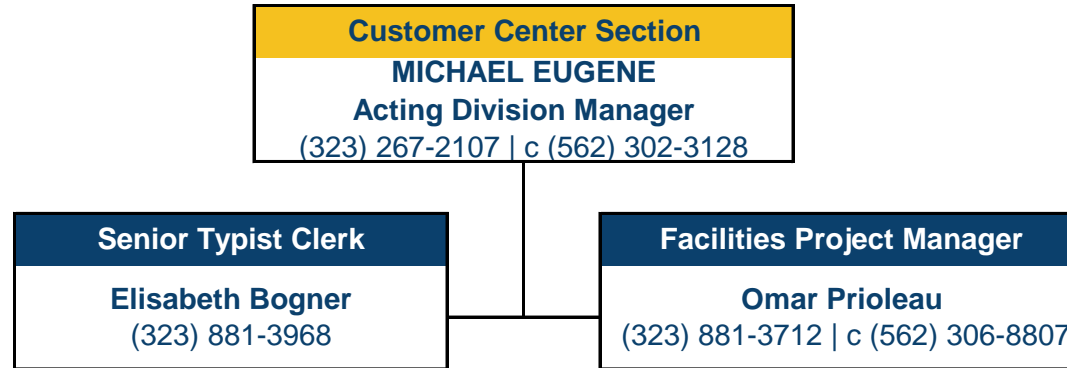
OPERATIONS SERVICE (OPS) ORGANIZATIONAL CHART & MAIN CONTACTS





CUSTOMER CENTER SECTION

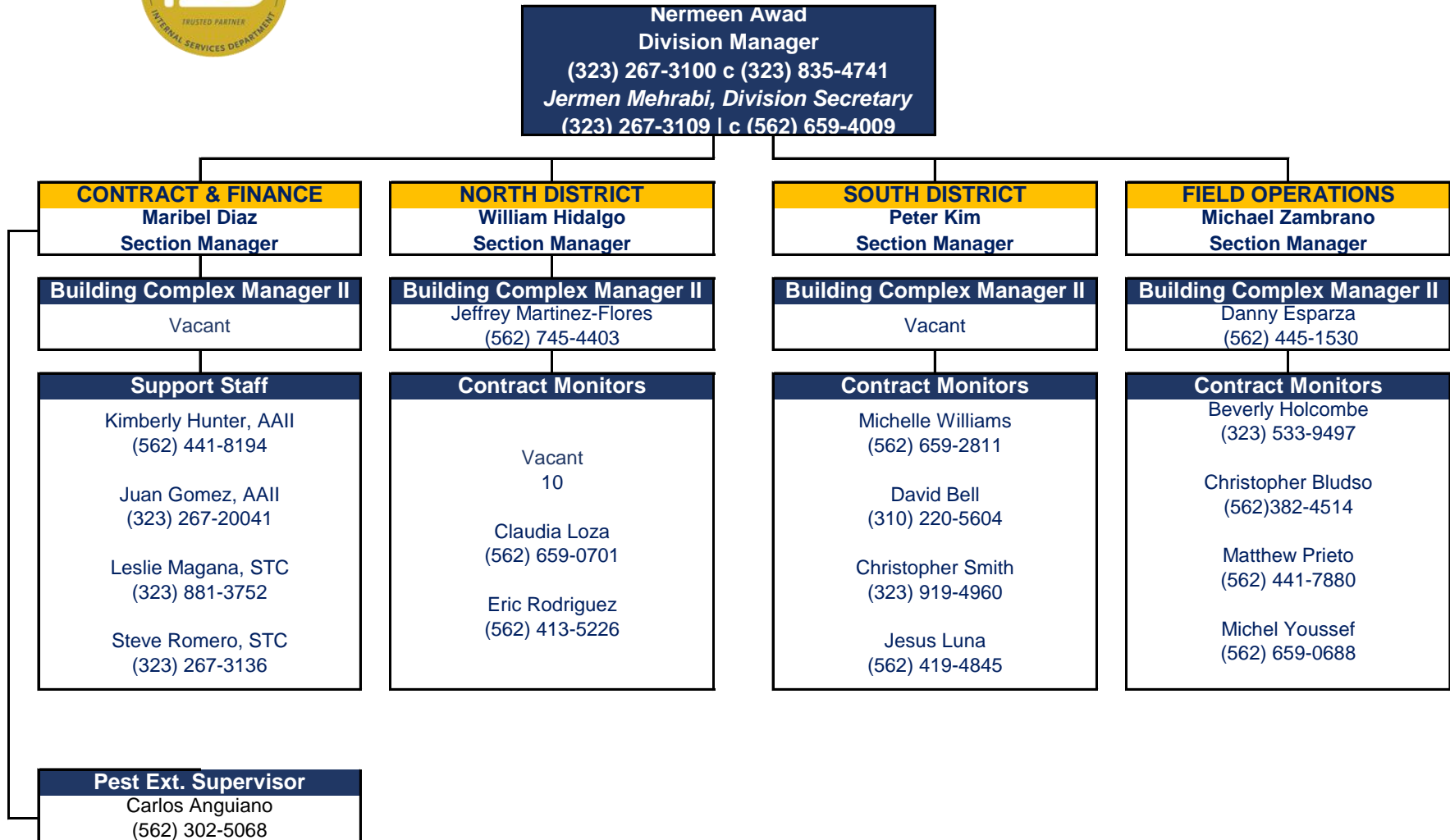
ORGANIZATIONAL CHART & MAIN CONTACTS





CUSTODIAL & LANDSCAPING DIVISION

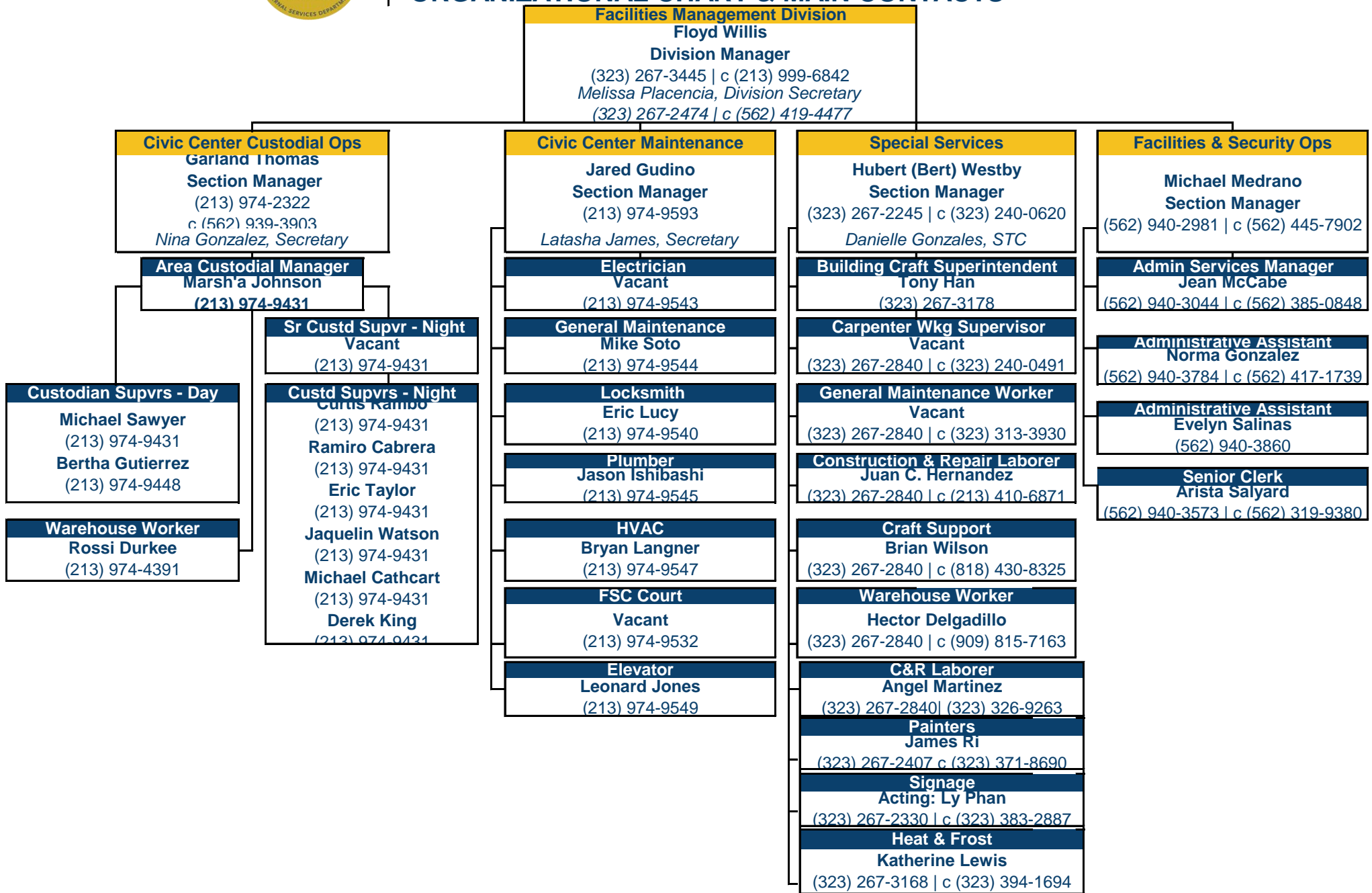
ORGANIZATIONAL CHART & MAIN CONTACTS





FACILITIES MANAGEMENT DIVISION

ORGANIZATIONAL CHART & MAIN CONTACTS





FLEET & LOGISTICS DIVISION

ORGANIZATIONAL CHART & MAIN CONTACTS

Fleet & Logistics Division
Anet Charbakhsh
 Division Manager
 (213) 974-9505 | c (562) 413-6750
Lisa Martinez, Division Secretary
 (323) 267-2035

FLEET SERVICES
 Michael Sanchez
 Section Manager
 o:(323) 881-3742
 c: (562) 413-3430
Chi-Tai "Melody" Lo, ITC
 (323) 881-3741

MAIL SERVICES
 Leana Anderson
 Section Manager
 o:(323) 267-3533
 c:(323) 243 8431.

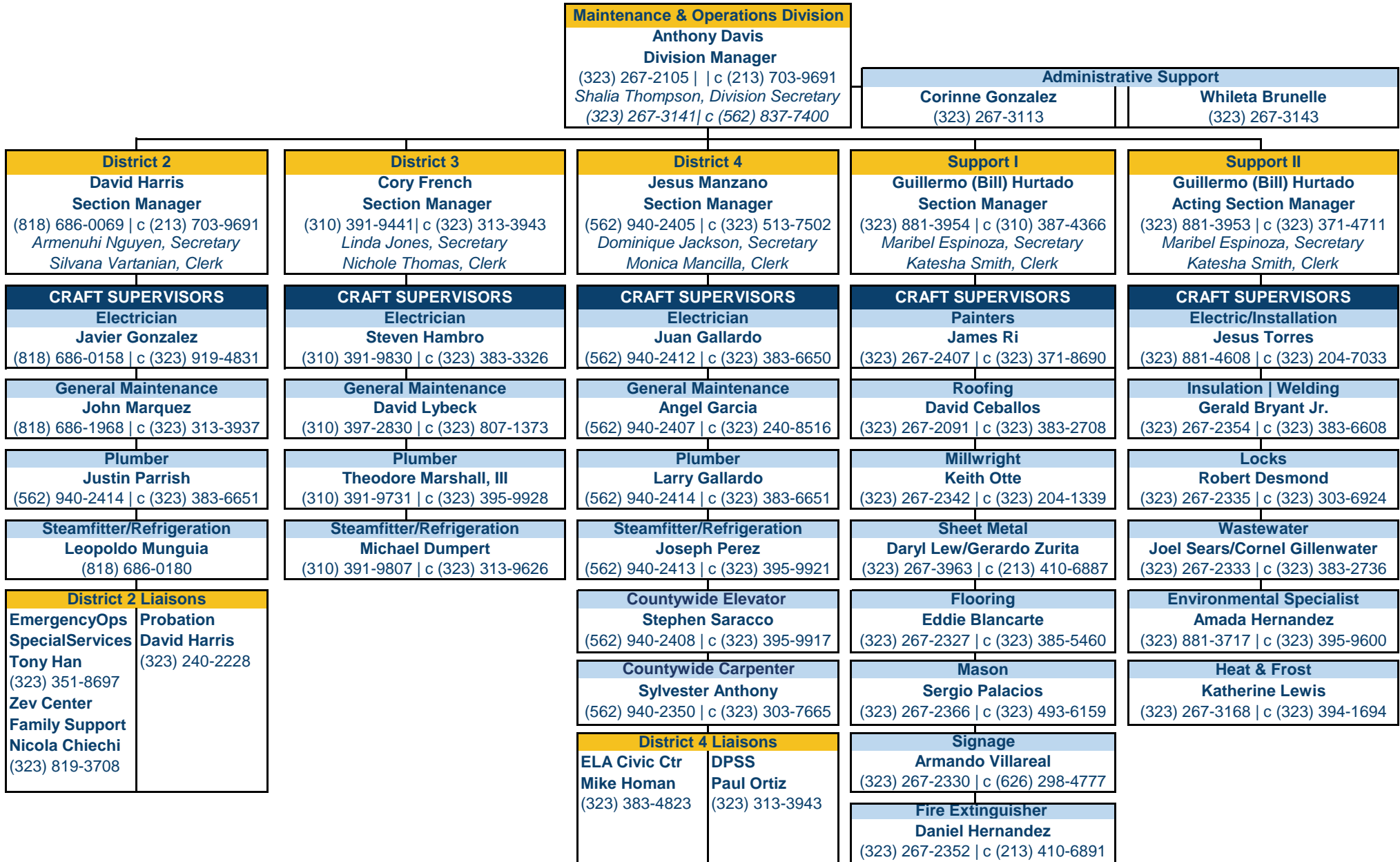
PARKING SERVICES
 Vacant
 Section Manager
 o:(213) 974-9505
 c:(562) 413-6750
Evelina Shahverdian, Sec'y
 (213) 974-9505





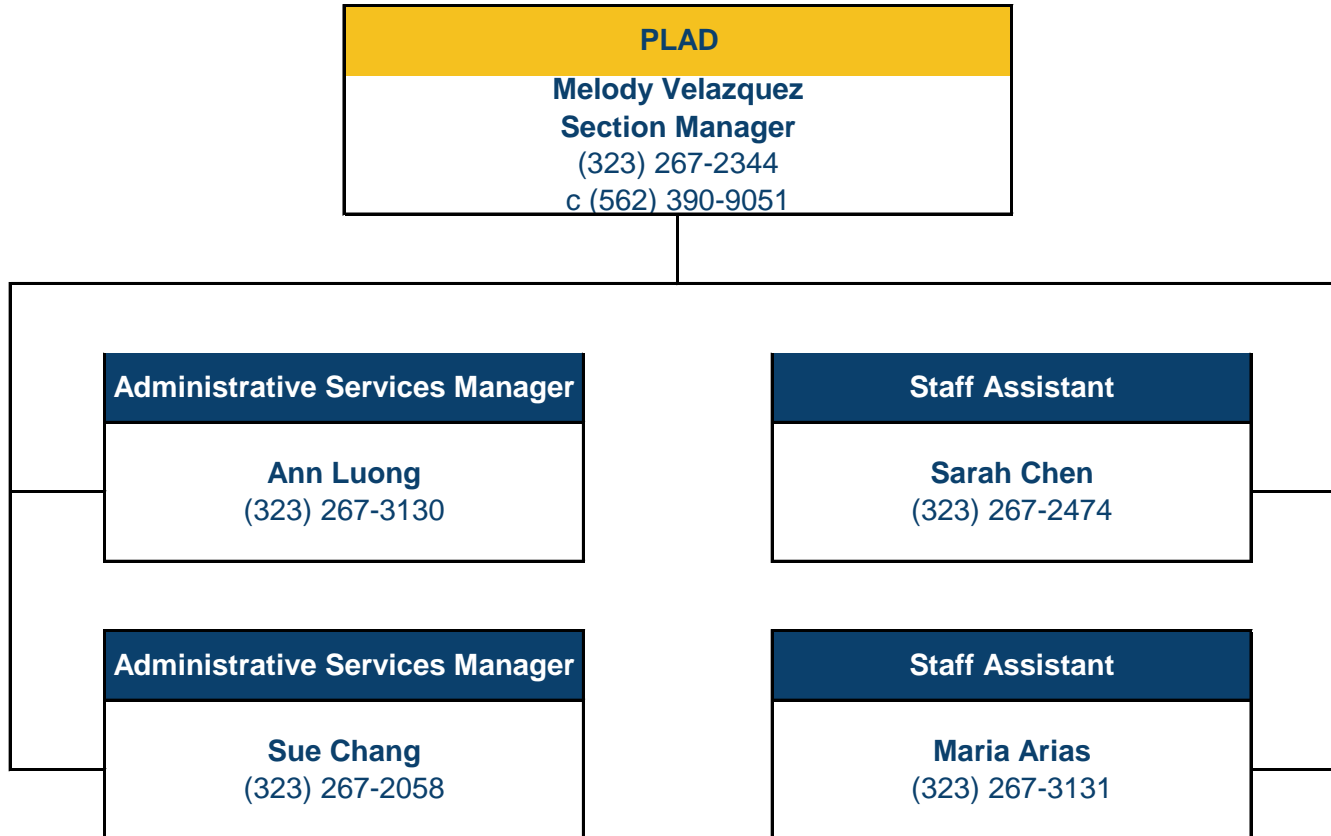
MAINTENANCE & OPERATIONS DIVISION

ORGANIZATIONAL CHART & MAIN CONTACTS





PLANNING & ADMINISTRATION SECTION ORGANIZATIONAL CHART & MAIN CONTACTS





PROGRAM & PROJECT MGMT DIVISION

ORGANIZATIONAL CHART & MAIN CONTACTS

Program & Project Mgmt Division
Thomas DeSantis
 Division Manager
 c (562) 992-1355
Margarita Berrueco, Division Secretary
 (323) 881-4438 | c (562) 359-7602

